

RELEASE NOTES – TEKLYNX CENTRAL v4.60.00
20 September, 2016

Table of Contents

System Requirements

New Features & Enhancements

Fixed Defects

Known Limitations

Compatibility with other TEKLYNX Software

System Requirements

Server:

Windows Server 2008 SP2 (x64)

Windows Server 2008 R2 (x64)

Windows Server 2012/2012 R2

.NET Framework 3.5 SP1 and 4.5.2 (provided on DVD)

ASP.NET 4.0

LAS 2015.02 with UMSS 2015.02 (versions from TEKLYNX CENTRAL 4.6 package)

SENTINEL 2015.01

CODESOFT 2015.01

IIS 7.0 or higher

SQL Server 2008/2008R2/2012/2014 or Oracle 11 (Oracle Client 32-bit is recommended on both 32/64 bit systems). SQL Server Express is recommended for demo purposes only.

Compatible with Virtual Machines: VMWare Workstation 7.1 and higher, Parallels 6.0 and higher, VSphere 5.0, HyperV 2012.

Installation requires administrator's privileges.

Follow TEKLYNX CENTRAL 4.6 PRINTING INTERFACE - IIS 7.0 CONFIGURATION GUIDE before installation.

Client:

Windows Vista SP2 (x32/x64)

Windows 7 SP1 (x32/x64)

Windows 8/8.1 (x32/x64)

Windows 10 (x32/x64)

Internet Explorer 11, Firefox 48.0 or higher, Google Chrome 52.0 or higher.

Note: It's allowed to use IE10 on Windows Vista SP2 only because it doesn't support modern IE versions.

New Features & Enhancements

TEKLYNX CENTRAL 4.6 is abbreviated as TC 4.6 in current document.

LABEL ARCHIVE related changes:

- **RTC4.60.00-01/08** Multiple reports enhancements including new filters, fixes, optimization of big amounts of data and visualization.
- **RTC4.60.00-10** Teklynx Central enhancement: filter label history for a particular TC user or TC workstation.
- **RTC4.60.00-12** When the label is in approval process, display information about next step.
- **RTC4.60.00-13** When creating an approval rule, a setting is added in Label Archive Client snap-in to specify that the user who created the label will receive an email when the label is approved or denied.
- **RTC4.60.00-13** Make sure it's possible to use LABEL ARCHIVE with UAC turned on.
- **RTC4.60.00-18** It should be possible to filter LAS history by Job name using wildcard characters (it is required to specify full name) e.g.: part1*part2, ?part3
- **RTC4.60.00-20** Enhancement: The report uses a grey background color that makes the reading difficult after printing on certain printers.
- **RTC4.60.00-21** Fix: If user selects only Date / Time / User to generate the report (information that is not depend on the label) and none of the label variables, the report generated does not reflect this selection whatever the label versions.
- **RTC4.60.00-22** Report formatting fixes.
- **RTC4.60.00-25** Fix: When adding a Windows user in UMSS, the search box does not allow searching user by the last name specified in the Active Directory but just by the user logon name.
- **RTC4.60.00-26** Fix: When adding a Windows user in UMSS, the information for the user: firstname, last name, phone, mobile, email and locked, should be automatically updated in the add user dialog box.

PRINTING INTERFACE related changes:

- **RTC4.60.00-09** Admin doesn't consume license on server but it's not possible login from remote Codesoft.
- **RTC4.60.00-14** Remove digital signature check in TEKLYNX CENTRAL, LAS and UMSS components.
- **RTC4.60.00-15** It's possible to install TEKLYNX CENTRAL with UAC turned on.
- **RTC4.60.00-17** LocalPrint distribution via GPO (avoid granting administrative rights on each client PC).
- **RTC4.60.00-19** LocalPrint plugin compatibility for modern browsers with HTML5: Chrome and Firefox recent versions without ActiveX support.

- **RTC4.60.00-24** Ability to specify that a specific version of a label is no longer valid. Once that a version of a label has been invalidated, it should no longer be possible to print it, even if it is a final version.
- **RTC4.60.00-27** The email content is configurable with dynamic data that are relevant with the approval process.
- **RTC4.60.00-28** Bring back Connections screen in External DB mode allowing user to set Printer/User logic.
- Enhancements and fixes in External DB mode:
 - * Selection of filter on Filters.aspx page throws an error
 - * Options for Auto-complete box made on Admin interface are not applied for External Database search
 - * Filters configured with SQL Query generate errors when query contains ORDER BY or GROUP BY clause
 - * Data sets configured with SQL Query generate errors if query contains ORDER BY clause.
 - * Display Form Variable Prompt option is now available for External Database mode (read-only feature).
 - * Print page: Alphabetical ordering of variables based on their names or prompts.
 - * Print page: Editable dropdowns for variables having data set defined.
 - * User and Workstation logics are now available for External Database option only with 'Only apply to printers' option enabled. The last option will be set automatically for target logic when it is being enabled with External Database option.
 - * Printer selected for server-side printing once will not be reset when another label or product is requested. Same printer could be used until end of user session.
 - * On Reprint, allow modification of variables which are used as formula parameters to calculate amount of labels (or label copies) to print (e.g. using @LABELCPY, @SERIALQTY control variables as formula name).
- **Infinite Print** option was removed.

[Back to Top](#)

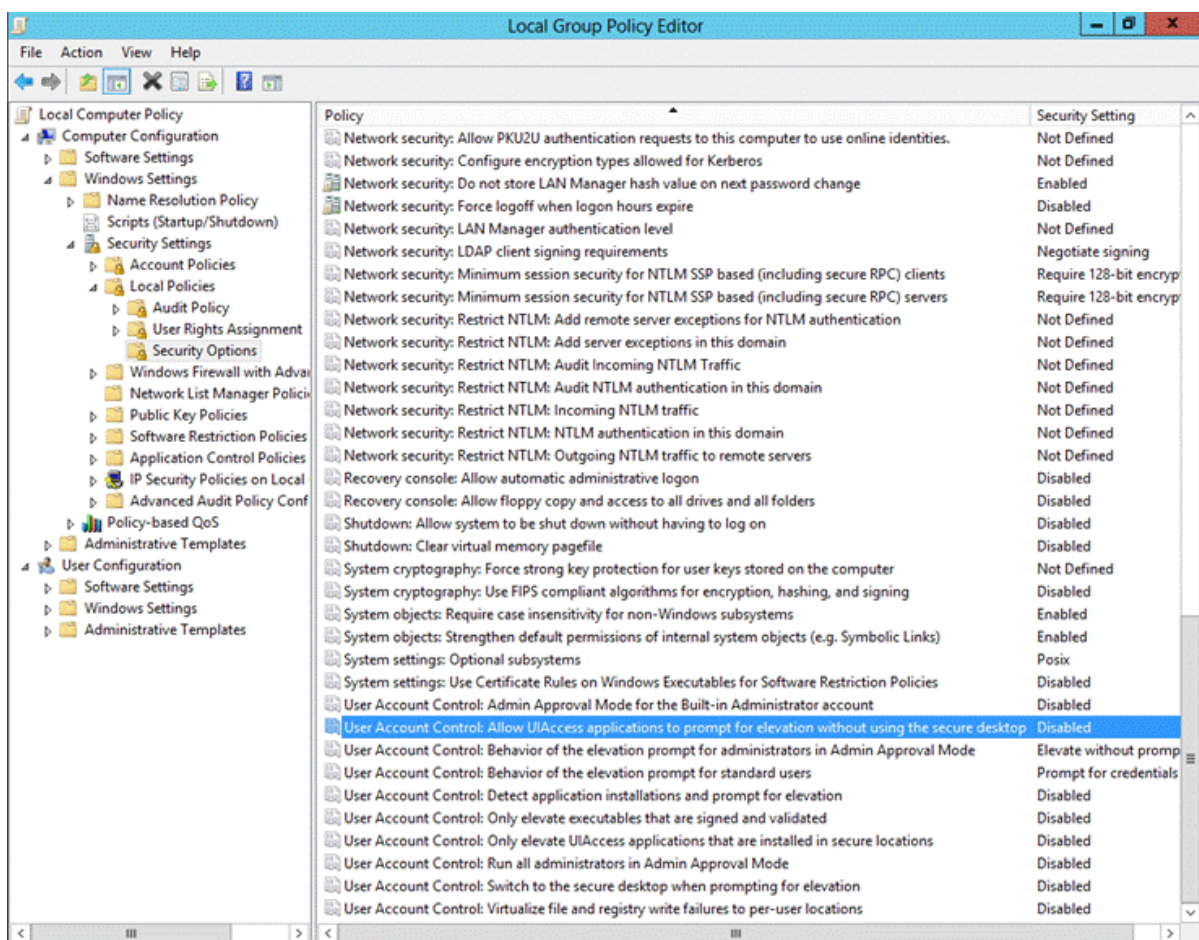
Fixed Defects

| Work Item ID | Title |
|-----------------------|---------------------------------------------------------------------------------------------------|
| 25788 | TC 4.60.00: Empty Naming values are saved to database as string with spaces |
| 26784 | TC 4.6 Remote installation doesn't work if user is not 'Domain Administrator' |
| 29865 | TC 4.6 Command Center - Connected Users. Instead of real user names, displayed their designation |
| 31298 | TC 4.6 TC Client Plugin does not work in Mozilla Firefox for Windows (64 bit) |
| 31539 | TC 4.6 build 10. Folder 'TEKLYNX UMSS-MSGs 2015.02' was not removed during uninstallation process |
| 31653 | TC 4.6 (Printing Interface): External variables search on Print page has not stable behaviour. |

| | |
|-------|------------------------------------------------------------------------------------------------------------------------------|
| 31654 | TC 4.6 Firefox crashes after Local print. |
| 31657 | TC 4.6 (LAS). Check out window. The button Save behaves incorrectly when resizing |
| 31658 | TC 4.6 (Printing Interface): 'From Grid' variable status is conflicted with other available statuses on Print page. |
| 31660 | TC 4.6. UMSS. Permission 'Document in not valid state'. Change conditions (add 'state = Final' condition) |
| 31686 | TC 4.6 (Web Admin): Firefox: Administration website uses NPAPI plugin instead of dedicated add-on |
| 31687 | TC 4.6 (Printing Interface): Variables are cleared on Print page even if it is not allowed to modify them. |
| 31689 | TC 4.6 (Printing Interface, Web Admin): Custom logo is not available after guide-based version upgrade |
| 31690 | TC 4.6 (Local Print): Variables are not saved after local print on Print page. |
| 31691 | TC 4.6 (Web Admin): Label Search doesn't work properly on Printer Logic tab. |
| 31820 | TC 4.6 (Local Print): Chrome: Local Print features are not functional on Reprint page. |
| 31861 | TC 4.6: Integrate Shepherd patches into CENTRAL 4.6 release |
| 31872 | TC 4.6 (Codesoft). Codesoft is crashed if the user is loggen to LAS (2 cases) |
| 31924 | TC 4.6 (Version Upgrade): UMSS: Custom user groups from TC 4.5 are not available after upgrade |
| 31935 | TC 4.6. Connections (web). If the admin deleted the connection, the user will anyway be able to work with Printing Interface |
| 31936 | TC 4.6 (LAS 2015.02). Check out, History. etc. If the table is sorted by any column, the search does not work |
| 31953 | TC 4.6 (External DB): Custom value in editable drop down list on Print page is not applied to preview. |
| 31971 | TC 4.6 Reports. Fields TCUser and TCWorkstation are not filled |
| 32011 | TC 4.6 (External DB): Product/Workorder variables logic is not applied during Print All and Local Print All operations. |
| 32013 | TC 4.6 (External DB): Queued Print Request failed to be created in External DB mode. |
| 32029 | TC 4.6 (External DB): Print All: User-selected dataset values are not retained for selected label |
| 32060 | TC 4.6 (External DB): Workorder variable initialization leads to error message |
| 32065 | TC 4.6 (Web Admin): Review code handling retrieval of data from CODESOFT data link directory |
| 32172 | TC 4.6. DVD interface. Supplementary manuals. Small IE problem |

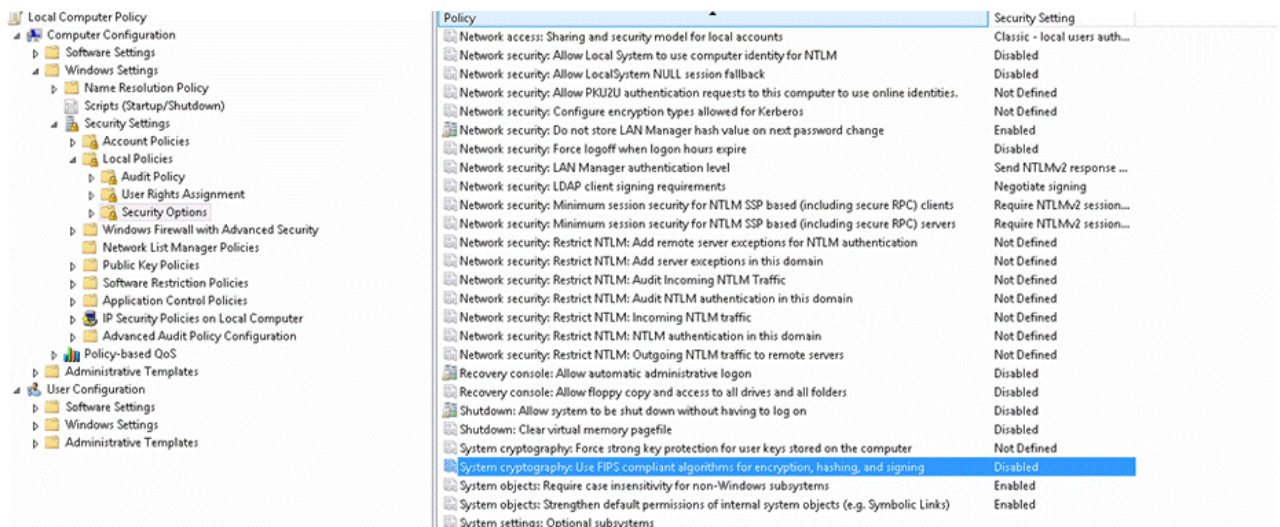
Known Limitations

- It recommended turning off **Windows Firewall, User Account Control and Antivirus** before installation.
- LocalPrint plugin installation requires **UAC** to be turned off. Also it's recommended to launch browser "as Administrator" at the time of plugin installation and adding new local printers using Printing Interface.
- **User Account Control** on modern server systems like Windows Server 2012 should be also turned off in Local Group Policies.

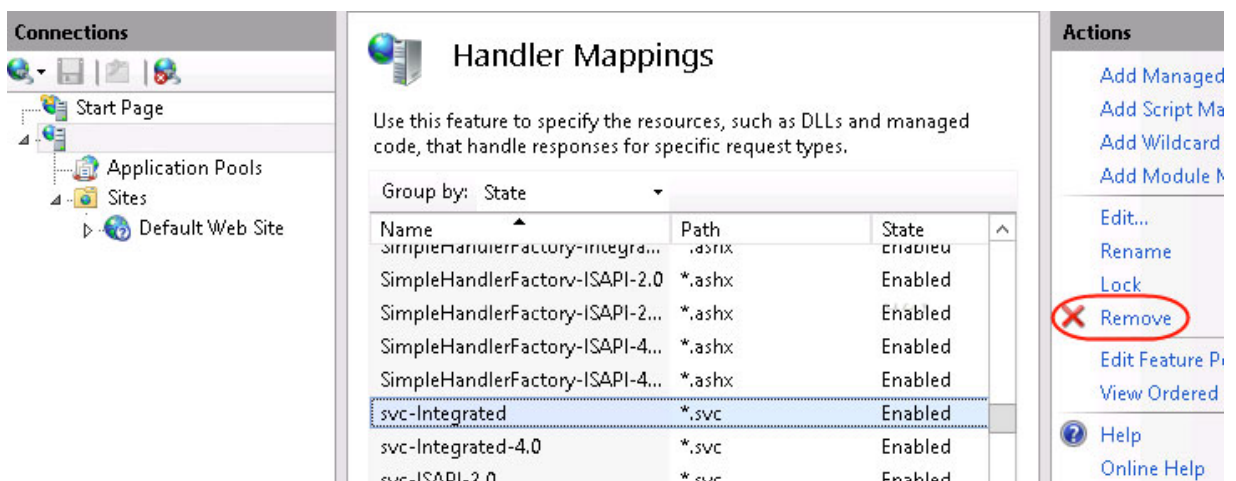
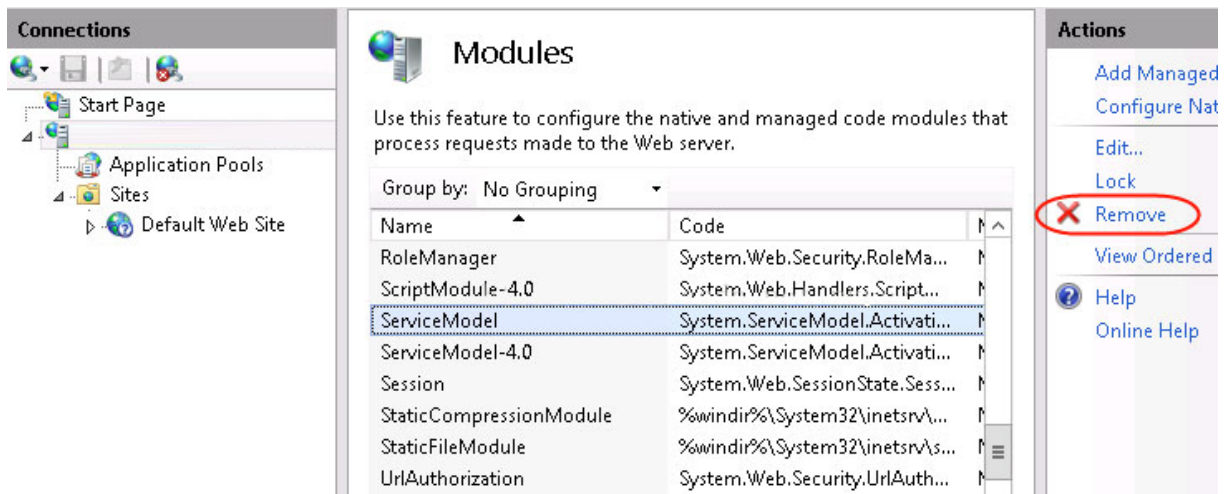


- **With UAC ON:** Launch Command Center with "Run as Administrator" option.
- **CODESOFT** consumes 2 licenses: 1 Designer User and 1 Report User for LAS. Remotely installed CODESOFT via Command Center prompts login screen twice.
- All standalone Teklynx products (CODESOFT, SENTINEL etc.) should be removed before TEKLYNX CENTRAL 4.6 installation.

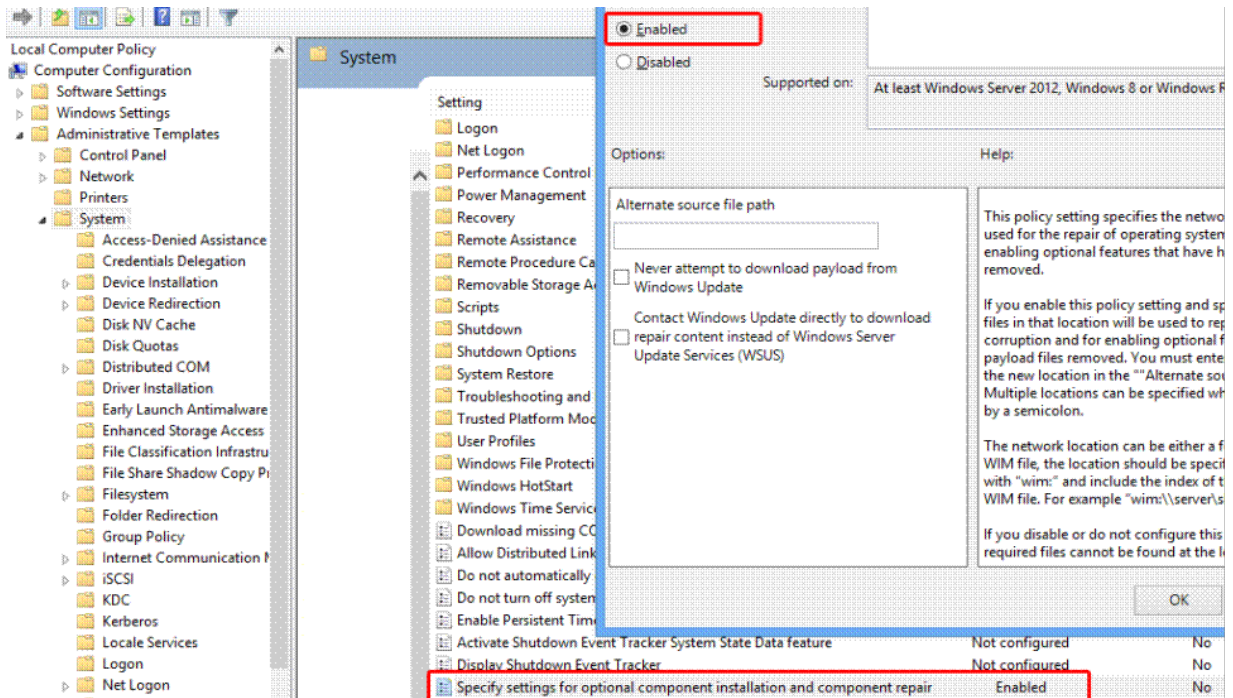
- **LocalPrint** plugin for **Google Chrome** will work only in Domain environment.
- **Upgrade** is possible from previous TC 4.5 only. **Restart PC after TC upgrade.**
- **Refresh browser cache after TC upgrade.** It's needed to clear cache via Settings menu of the browser or press Ctrl + F5 on web page.
- **Upgrade:** Action handler's dlls in MSGS actions should be re-selected manually to refresh dll version (i.e. from 2014 to 2015). This should be done for email notifications and all other handlers.
- It's strongly advised to turn off Windows Security option "**System Cryptography: Use FIPS compliant algorithms for encryption, hashing, and signing**". This option to may cause connectivity problems (LA, Printing Interface etc.) when it's turned on by default in Local Computer. Microsoft techs provide explanation for this option.
<http://blogs.technet.com/b/secguide/archive/2014/04/07/why-we-re-not-recommending-fips-mode-anymore.aspx>
<https://support.microsoft.com/en-us/kb/811833>



- After TC reinstall **it's needed to re-add printers** in Sentinel and check them again.
- User should reinstall or upgrade TC under the same DB user.
- **Activation** of expired software requires server PC to be restarted.
- If web site on the first launch displays error "Could not load type 'System.ServiceModel.Activation.HttpModule' from assembly 'System.ServiceModel, Version=3.0.0.0, Culture=neutral, PublicKeyToken=b77a5c561934e089'", please remove duplicate ServiceModel and svc-Integrated records following screenshots below.



- **SQL Server 2012:** Sysadmin server role should have NT AUTHORITY\SYSTEM membership.
- **SQL Server** password should not have hash sign # in the password (Installshield bug). Also it's highly recommended to not use other special characters. The best is alphanumeric and underscore.
- **Windows Server 2012/Win 8:** IIS should have the following features enabled: ASP.NET 4.5, и .NET 4.5 Extensibility.
- **Windows 8.1/2012 R2:** Microsoft .NET 3.5 installation requires changes of Local Computer policy according to screenshot below.



- In case of connectivity issues (**LocalPrint** cannot add driver, cannot print etc.) it's recommended to try turning IPv6 off in network adapter settings.
- **Mozilla Firefox:** When Client Plugin is already installed on local system and new Firefox profile is created, the TEKLYNX CENTRAL Client Add-on will be disabled by default for this profile. User should enable add-on manually using Add-ons - Extensions tab.
- **LocalPrint** connectivity may also be affected by network traffic optimizers hardware or firewalls. These devices should be turned off or adjusted to let printing traffic pass without modifications.
- **LocalPrint** on Windows printers limitation: printing works only with millimeters, inches are not supported.
- **LocalPrint** should be installed under Administrator account on client PC.
- **Remote Installation** of CODESOFT/LABEL ARCHIVE Client can be performed only in the same domain as launched Command Center.
- **Sentinel** first print usually takes more time because of Codesoft engine instantiation (cold start). Also Codesoft engine is re-instantiated each 4 hours and this causes temporary print speed decrease.
- It's not recommended to add new TCPreview and TCPrint Sentinels manually. They may lock default TC Sentinels.

- When TC 4.6 is installed on the language different from the default English, Sentinel Management tools still will be displayed in English. It's necessary to manually select preferred language in these applications.
- TC 4.6 PRINTING INTERFACE Web Site, TC 4.6 PRINTING INTERFACE Administration, SENTINEL 2015.01, LABEL ARCHIVE 2015.01 must be installed on the same PC. All Sentinel watches will be created automatically.
- For TEKLYNX CENTRAL web sites configuration is described in "TEKLYNX CENTRAL 4.6 PRINTING INTERFACE - IIS 7.0 CONFIGURATION GUIDE.doc". IIS 6 compatibility mode should be enabled in server roles.
- After TC 4.5 is uninstalled, the Local Print component must be uninstalled from each workstation manually.
- Default PrintUser doesn't have enough rights to use actual Printing Interface because he's not a member of ACPrintUsers group. This PrintUser is mostly intended for Sentinel and consumes no license.
- If an external database is located in the network, it should be accessible with read/write permissions.
- If SENTINEL 2015.01 was not used for a period of time (10 minutes or more), getting a preview of a label after changing variables values might fail the first time. It will be displayed on the second try.
- Expired labels will not be printed by Sentinel even if Printing Interface will show the success message.
- Local printing from Test print does not display watermark due to TlxPECu.exe functionality limitations.
- Reprint page. For the records formed by Local Print, the field "Printer" is empty.
- When printing to a file (XPS, PDF, etc.), file selection dialog is shown on a different desktop which can be accessed by Interactive Services dialog provided by these operation systems. This dialog is sometimes shown a certain period of time after clicking the Print button.
- Limitation for input strings in "Naming" feature is 30 characters. (Long strings may stretch UI).
- "Naming" feature may produce incorrect orthography in complex phrases on languages different from English.
- On some systems, Windows Authentication for Microsoft SQL Server does not work. It is recommended to use SQL server in the native or mixed authorization mode.

- In order to apply new language for all products, it's required to change corresponding registry key.
- License isn't released immediately if user closes the Printing Interface browser window. Instead, it's highly recommended to use "Logout" buttons. Automatic timeout for session and releasing license is 20 minutes.
- Local Print feature uses only one Sentinel which processes all incoming requests in the queue. Printing performance may be affected by big amount of simultaneous printing jobs from different remote clients.
- CODESOFT installed on the remote workstation through Command Center's remote installation feature doesn't allow changing password which is expired using UMSS login form. The password can be changed in any other application (CODESOFT on server side, UMSS/MSGs administration console).
- If user changes the license type (for example, software key to hard key) it's needed to refresh the Licensing service in Command Center or restart it manually.
- Window popups of TEKLYNX CENTRAL Administration and Printing Interface are closed after 15 minutes of inactivity.
- If you suffer issues with logout on Internet Explorer 10, the following hotfix should be applied: <http://support.microsoft.com/?kbid=2600088>
- **Oracle limitations:**
 - It's recommended to install Oracle Client x32 edition on both x32/x64 systems.
 - Oracle installation: Install ODAC 11.2.0.3.0 (provided on TC DVD) after TC 4.6 and .NET 4.0 installations.
 - Windows authentication may fail if Oracle database is adjusted to use case-sensitive strings. UMSS keeps Windows user credentials in lowercase ("domain/username"), but checking the "Windows Authentication" checkbox on login forms will substitute workstation domain in uppercase ("DOMAIN/username"). To avoid failures during login, change uppercase characters to lowercase.
- **TC 4.6 External DB mode limitations:**
 - Input masks are not supported in External DB mode.
 - Configuration of filters and label data definitions based on SQL Query does not support LIKE operator in WHERE clause of SQL statement.
 - "Hide Printed Labels" is not supported in External DB mode.

- The External Database connectivity has only been tested with MS SQL Server data sources. Other data sources were not tested as external databases and may cause instabilities in the system.
- **UMSS** limitations:
 - UMSS does not support un-registration of applications, only re-registration is available.
 - UMSS: Dynamic Category permissions are not editable in the scope of TC.

[Back to Top](#)

Compatibility with other TEKLYNX Software

TEKLYNX CENTRAL v4.60.00 is compatible and fully tested to work with the following TEKLYNX software packages:

- LABEL ARCHIVE 2015.02 (TC 4.6 package version)
- UMSS/MSGs 2015.02 (TC 4.6 package version)
- CODESOFT 2015.01
- SENTINEL 2015.01.01

[Back to Top](#)

Copyright 2016 Teklynx Newco SAS. All rights reserved. TEKLYNX and its products are trademarks or registered trademarks of Teklynx Newco SAS or its affiliated companies. All other brands and product names are the trademarks of their respective owners.

This release notes document is for informational purposes only. Product specifications are likely to change.