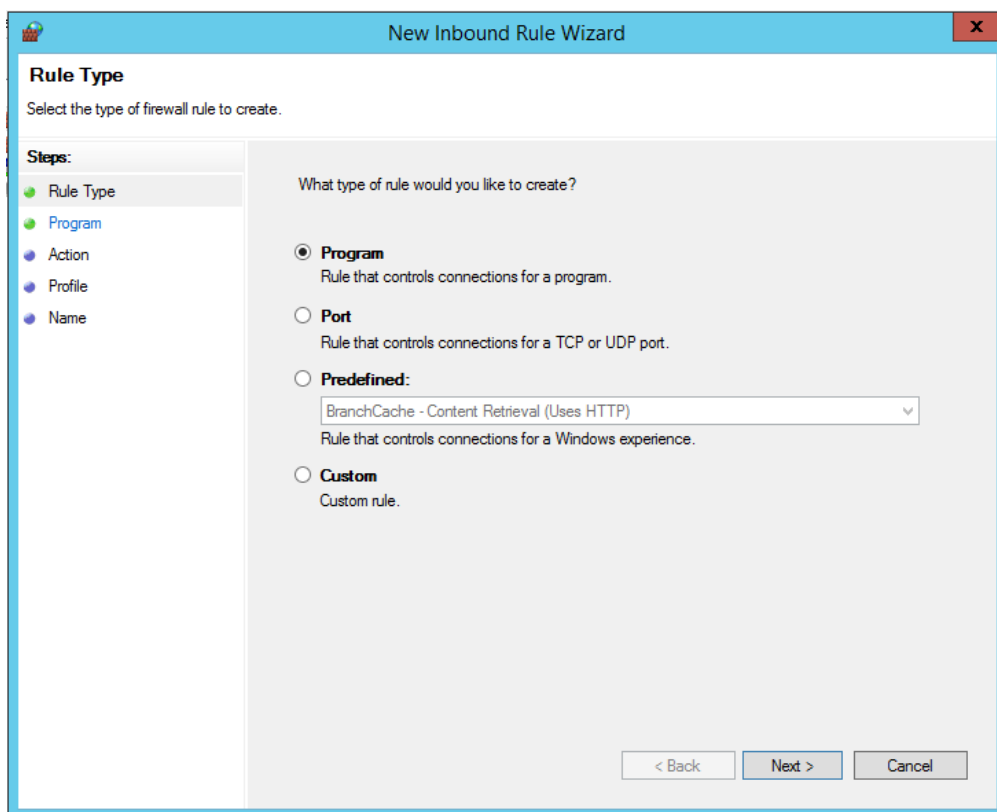
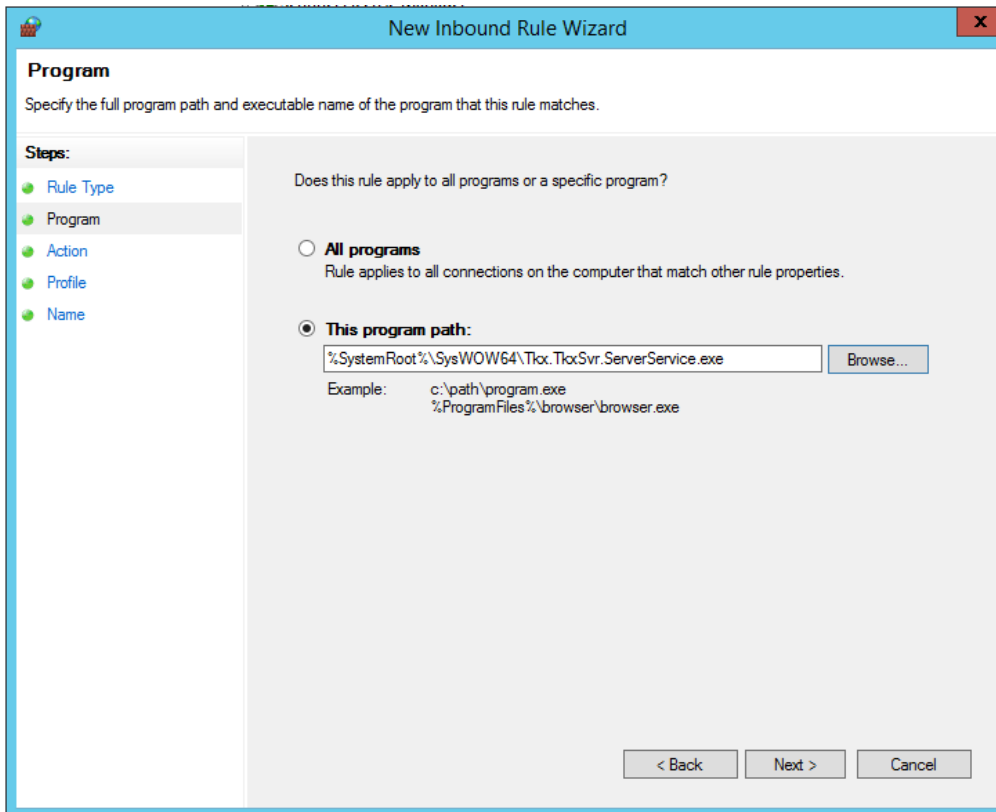


TC 4.6 Remote Installation Guide

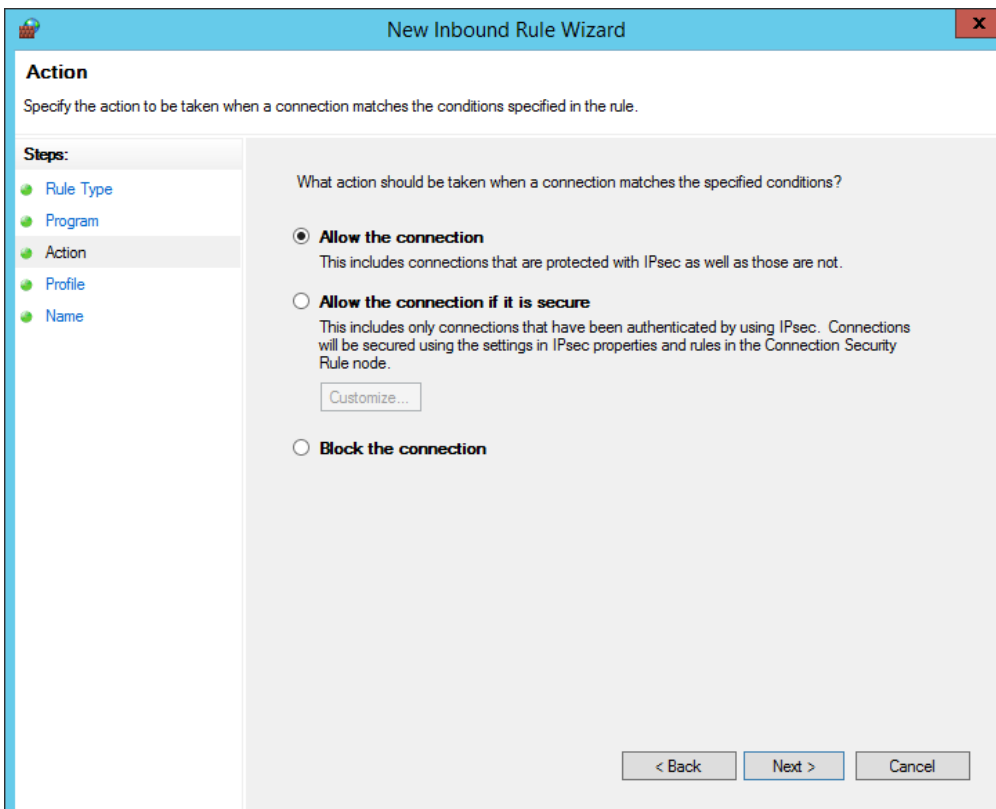
Server side

1. In a case of turned on Windows Firewall:
 - 1.1. Enable “Windows Management Instrumentation (ASync-In)” inbound rule for domain profile in firewall.
 - 1.2. Create and enable “UMSS” inbound rule for domain profile that allows the connection.





Program path: %SystemRoot%\SysWOW64\Tkx.TkxSvr.ServerService.exe



New Inbound Rule Wizard

Profile

Specify the profiles for which this rule applies.

Steps:

- Rule Type
- Program
- Action
- Profile
- Name

When does this rule apply?

Domain
Applies when a computer is connected to its corporate domain.

Private
Applies when a computer is connected to a private network location, such as a home or work place.

Public
Applies when a computer is connected to a public network location.

< Back Next > Cancel

New Inbound Rule Wizard

Name

Specify the name and description of this rule.

Steps:

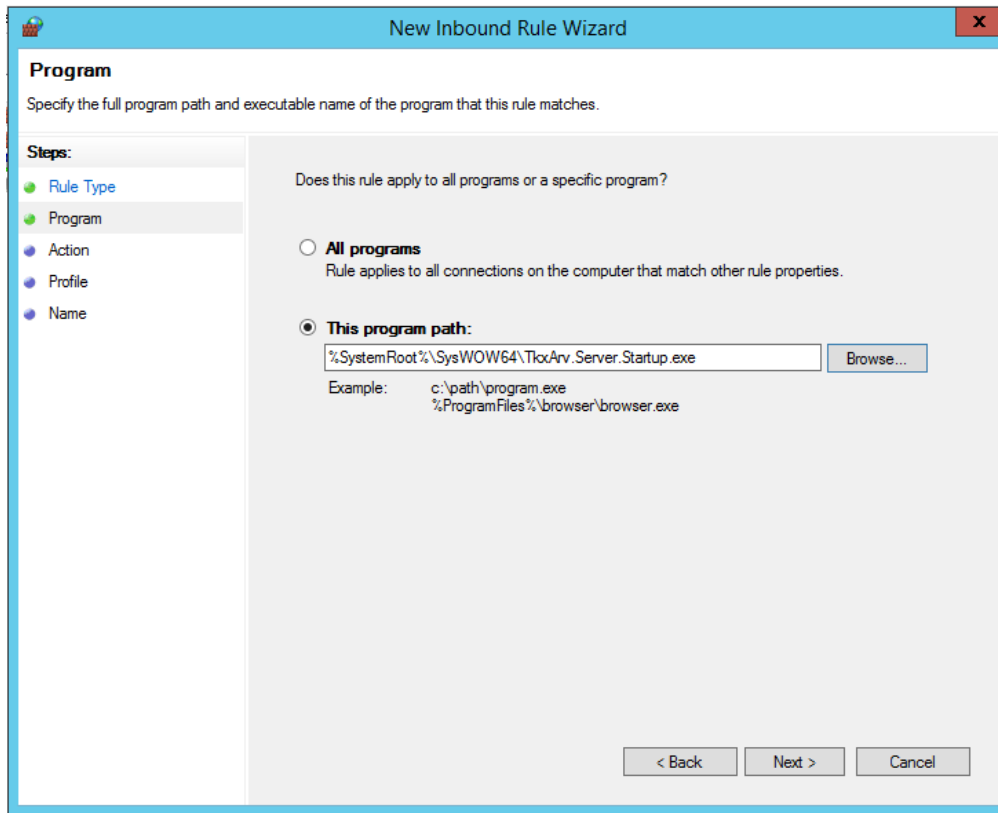
- Rule Type
- Program
- Action
- Profile
- Name

Name:

Description (optional):

< Back Finish Cancel

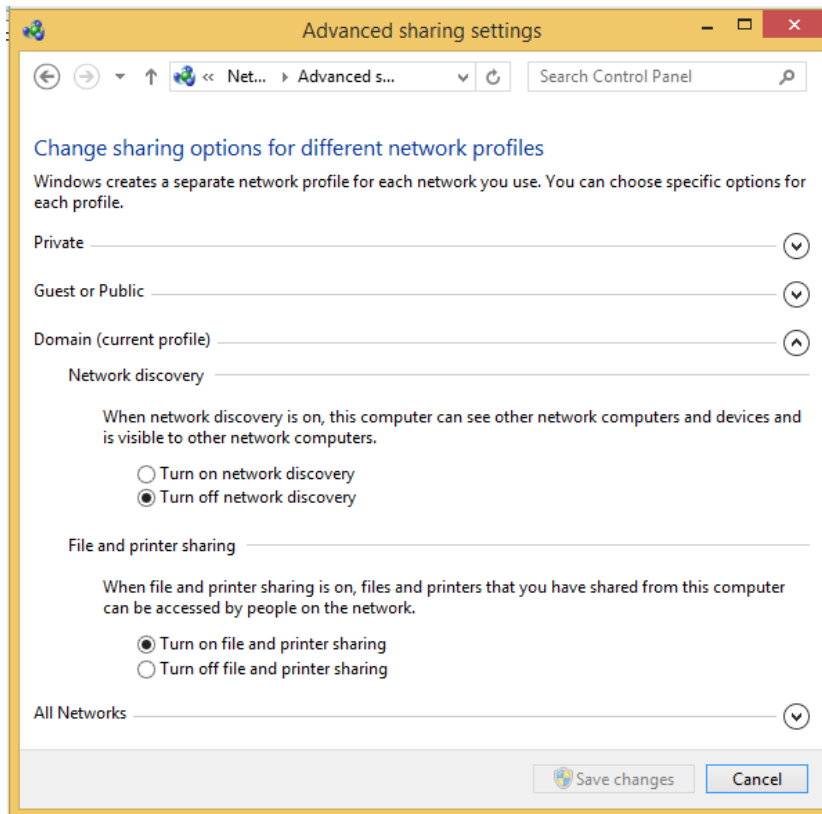
1.3. Create and enable "LAS" inbound rule for domain profile that allows the connection.



Program path: %SystemRoot%\SysWOW64\TkxArv.Server.Startup.exe

Client side (Remote PC)

1. Current user should have administrative privileges on target remote PC.
2. Following prerequisites should be installed:
 - a) .NET Framework 3.5 SP1
 - b) .NET Framework 4.0 Full
 - c) Adobe Reader
3. Remote Registry service should be enabled and started.
4. In a case of turned on Windows Firewall:
 - 4.1. Turn on file and printer sharing (E.g. for Win 8.1: Control Panel\Network and Internet\Network and Sharing Center\Advanced sharing settings).



- 4.2. Enable "File and Printer Sharing (Echo Request – ICMPv4-In)" inbound rule for domain profile in firewall.
- 4.3. Enable "Windows Management Instrumentation (WMI-In)" inbound rule for domain profile in firewall.