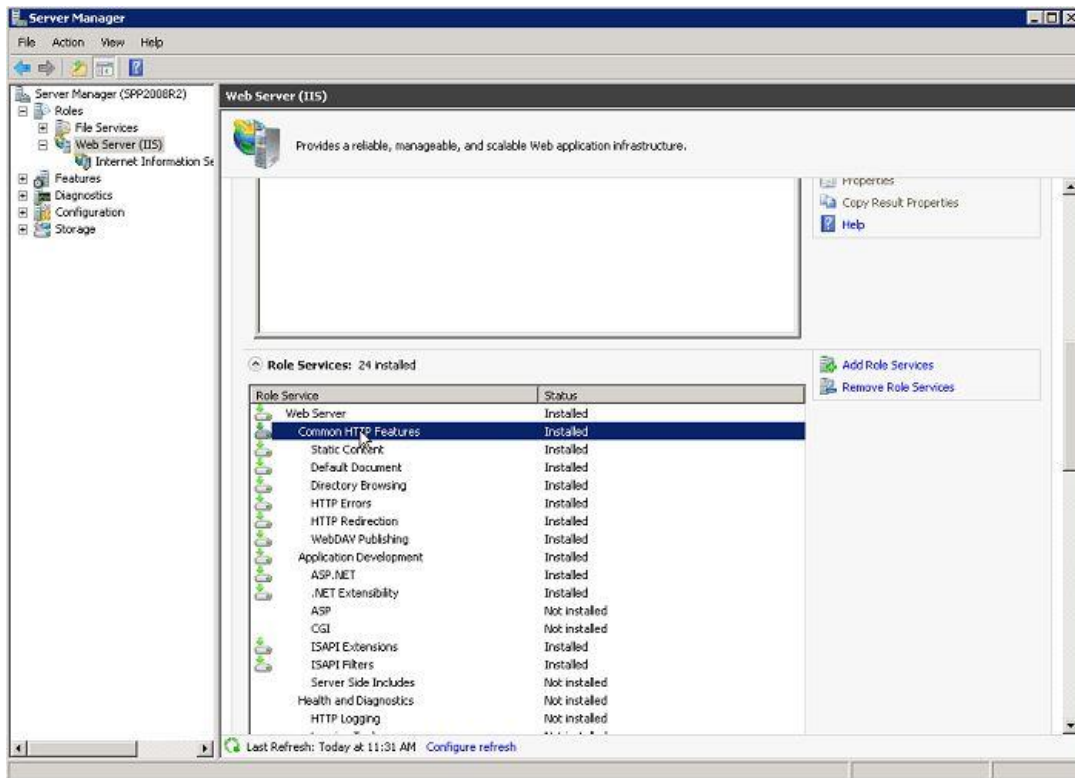


TEKLYNX CENTRAL 4.6

IIS Configuration Instructions

BEFORE TEKLYNX CENTRAL installation

1. Install ASP 4.0 if it's not present. Manual installation string:
C:\Windows\Microsoft.NET\Framework\v4.0.30319\aspnet_regiis -i
2. Make sure correct IIS roles are installed.



The following IIS components are NOT required so they may not be installed:

- WebDAV Publishing
 - ASP (it's different from ASP.NET)
 - CGI
 - Server Side Includes
 - Client Certificate Mapping Authentication
 - IIS Client Certificate Mapping Authentication
 - ODBC Logging
 - Dynamic Content Compression
 - FTP and its features
 - IIS Hostable Web Core
3. Enable ASP.NET 4.0 in Web server ISAPI and CGI restrictions (top node).

Connections

Start Page
BD-2008R2 (TEKLYNXDEV)\alex.b

ISAPI and CGI Restrictions

Use this feature to specify the ISAPI and CGI extensions that can run on the Web server.

Group by: No Grouping

Description	Restriction	Path
Active Server Pa...	Allowed	%windir%\system32\inetmgr\asp.dll
ASP.NET v2.0.5...	Allowed	%windir%\Microsoft.NET\Framework64\v2.0.50727\aspnet_isapi.dll
ASP.NET v2.0.5...	Allowed	%windir%\Microsoft.NET\Framework\v2.0.50727\aspnet_isapi.dll
ASP.NET v4.0.3...	Allowed	C:\Windows\Microsoft.NET\Framework\v4.0.30319\aspnet_isapi.dll
ASP.NET v4.0.3...	Allowed	C:\Windows\Microsoft.NET\Framework64\v4.0.30319\aspnet_isapi.dll
WebDAV	Allowed	%windir%\system32\inetmgr\webdav.dll

4. Restart IIS Service.
5. Launch Teklynx Central 4.6 installation.